

A stylized illustration featuring a hand holding a smartphone. The phone's screen displays a cityscape with a prominent tower. The background is composed of large, overlapping circular and wavy shapes in shades of maroon, teal, and dark blue. The overall style is modern and graphic.

Radioguide®

**ADVANCED DIGITAL  
TECHNOLOGIES  
FOR GUIDED TOURS**

**RADIOGUIDE RG-18**



# RADIOGUIDE RG-18

The RG-18 Radioguide equipment package was developed for use in conducting group excursions/tours. It includes convenient individual receivers for group members, a guide kit (for tour guides, chaperones, or tour leaders), and accessories for charging and storage of the devices. RG-18 equipment stands out from its competitors thanks to its reliability and durability. Additionally, it can be used with a wide range of batteries and headphone sets.

## THE EQUIPMENT IS USED:





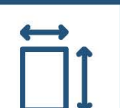


- in museums;
- during bus tours;
- on water walks;
- when visiting historical places;
- at conferences using simultaneous translation





# TECHNICAL SPECIFICATIONS

## RECEIVER

-  supply voltage range-3.3 ... 4.2 V current
-  consumption in operating mode-30 mA current
-  consumption in standby mode-15 mA operating
-  frequency Range-2400 ... 2483 MHz overall
-  dimensions-86.5 × 54.5 × 8.3 mm
-  weight-60 g
-  continuous operation time-30 hours

## TRANSMITTER

-  supply voltage range - 3.3 ... 4.2 V supply
-  current-50 mA
-  operating frequency range - 2400 ... 2483 MHz
-  output power-50 mW
-  radiation bandwidth-0.55 MHz radio
-  range-100 m
-  overall dimensions-86.5 × 54.5 × 8.3 mm
-  weight-60 g
-  continuous operation time-18 hours



**MODERN DESIGN**

**5**

**BODY  
COLORS**



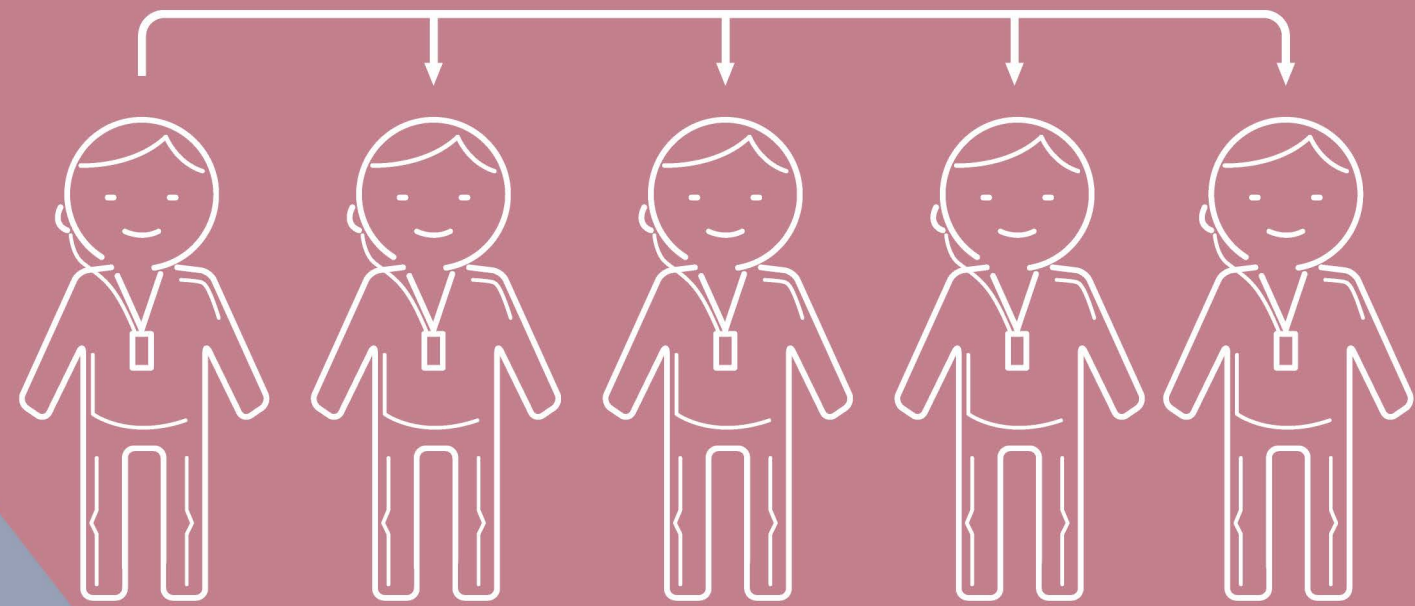
**UNIQUE DESIGN  
FOR ANY TASKS**





**RADIOGUIDE RG-18 FOR GROUP USE**





**SUPPORT OF A TOUR GROUP WITH  
A PROFESSIONAL GUIDE AND  
HIGH-QUALITY EQUIPMENT**

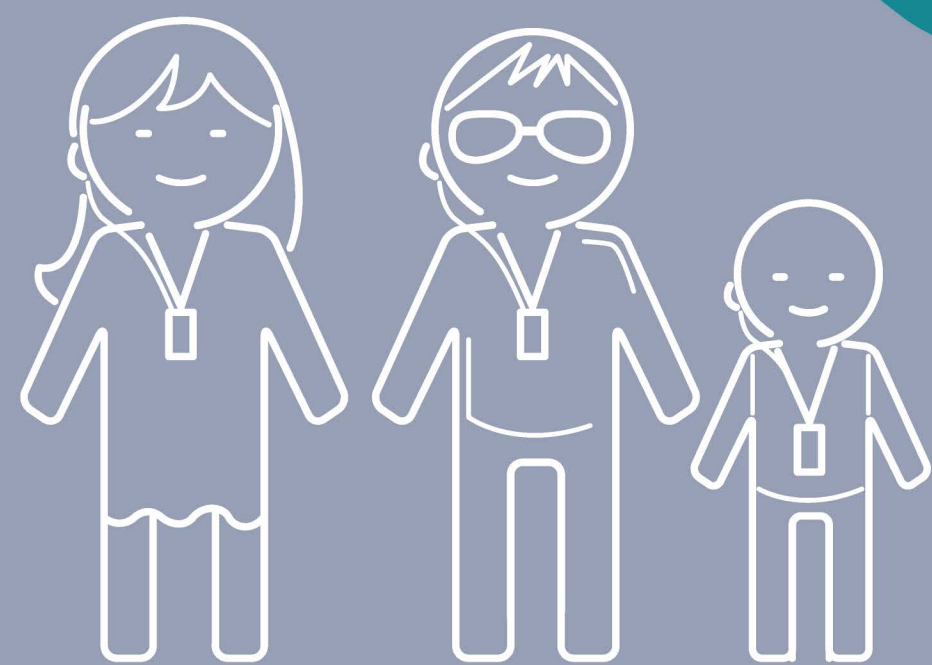


**IT IS POSSIBLE TO SUPPORT  
MULTILINGUAL GROUP OF ONE PERSON**

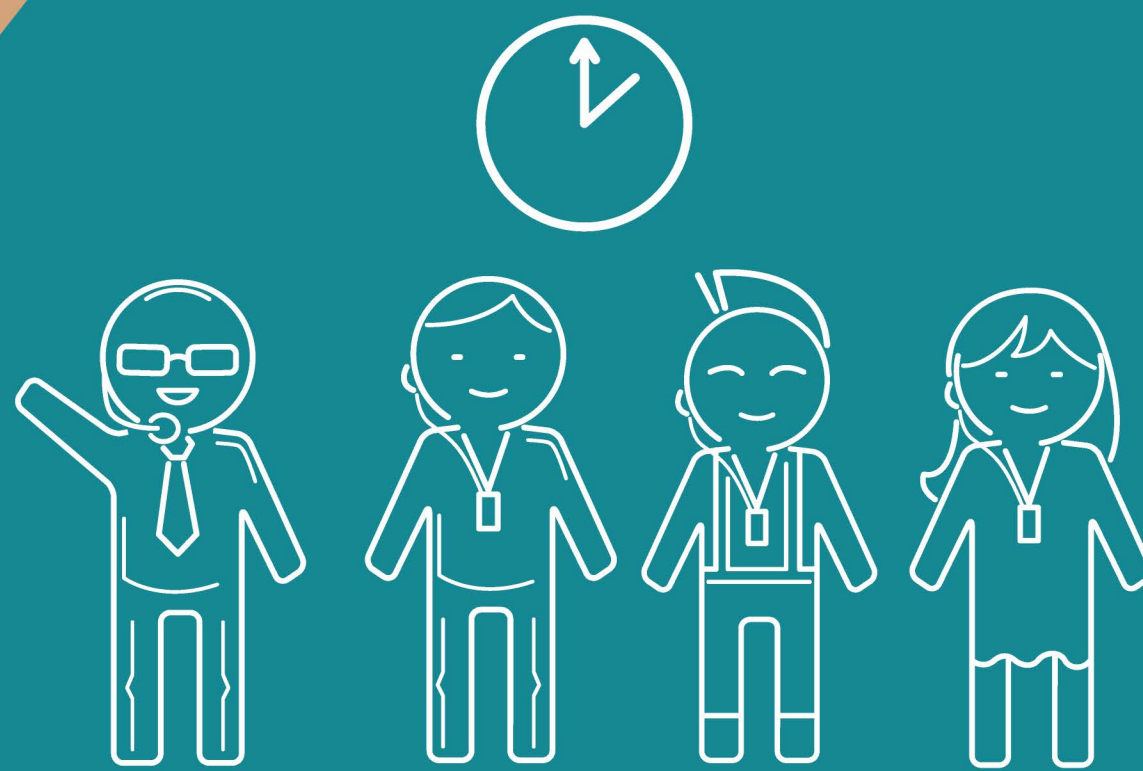


**SUBMISSION OF RELIABLE  
MATERIAL TO TOURISTS**

## **OPTIMIZATION EXCURSION SERVICE**



**IT IS POSSIBLE TO SUPPLY MATERIAL  
FOR BOTH ADULTS AND CHILDREN**



**OPTIMIZATION OF THE TIME SPENT  
BY THE EXCURSION GROUP**



**THE EFFECT OF SILENCE DURING  
EXCURSIONS**

**THANK YOU FOR YOUR ATTENTION!**

Radioguide®